

MP-110F

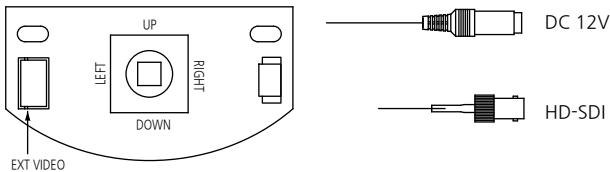
HD Indoor Dome Camera



FEATURES

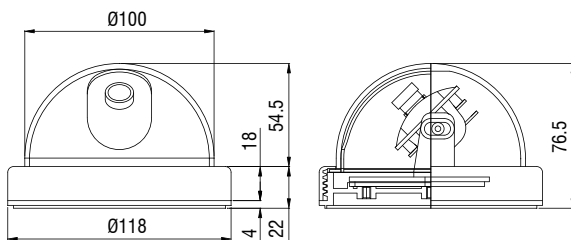
- 1/2.9" Sony "Exmor" CMOS Sensor
- Full HD Resolution: 1080p 30fps/ 720p 60fps
- 3mm Mega Pixel Fixed Lens
- WDR (Wide Dynamic Range)
- DNR (Digital Noise Reduction: 2D + 3D)
- Privacy Mask Function
- Intelligent Motion Detection
- Defog Function: Defogging foggy video image
- Dome size :100Ø
- Plastic housing for indoor application

OSD CONTROL



DIMENSIONS

Unit : mm



SPECIFICATIONS

MODEL	MP-110F
Image Sensor	1/2.9" CMOS Sensor
Total Pixels	2,000(H) x 1,121(V), 2.24M Pixels
Active pixels	1,936(H) x 1,105(V), 2.12M Pixels
Scanning system	Progressive
Resolution	Digital ; 1920x1080p(1080p/30fps) , 1280x720p(720p/60fps) Analog : 700TVL
Min. illumination	Color : 0.5 lux , BW : 0.1lux Color DSS : 0.002 lux , BW DSS : 0.001 lux
Video Output	HD-SDI, Test Video Out (Analog : NTSC, PAL)
Lens	3mm Fixed Lens
S/N Ratio	more than 50dB (AGC off)
BRIGHTNESS	0 ~ 20 steps
LENS	DC / Manual
SHUT SPEED	Auto / Manual (1/30(1/25) ~ 1/60000)
FLICKERLESS	Off / On
DSS	Off / x2 / x3 / x4
AGC	Off / On
WDR/BLC	Off / WDR / BLC
DAY&NIGHT	Auto / Day / Night / Ext
WHITE BAL	Auto / One Push / Manual / Indoor / Outdoor
SHARPNESS	0 ~ 10 steps
MIRROR	Off / H / V / H&V
FREEZE	Off / On
E.ZOOM	x1 ~ x32
HLC	Off / On
ACE	Off / On
DNR	Off / Low / Middle / High / Auto
D.COMPRESS	Off / On
PRIVACY	Off / On (32 points)
MOTION	Off / On (4 points)
SHADING DET	Off / On
SHADING	Off / On
DEFECT DET	Off / On
DEFOG	Off / On
HD FORMAT	1080P / 720P
PG	Off / On
CVBS	Off / On
Language	English, Japanese, Chinese
Power Source	DC12V ±10%
Power Consumption	Max 250mA
Power Input	Connector
Operating Temperature	-10℃ ~ +50℃ (Humidity : 0%RH ~ 80%RH)
Storage Temperature	-20℃ ~ +60℃ (Humidity : 0%RH ~ 90%RH)